

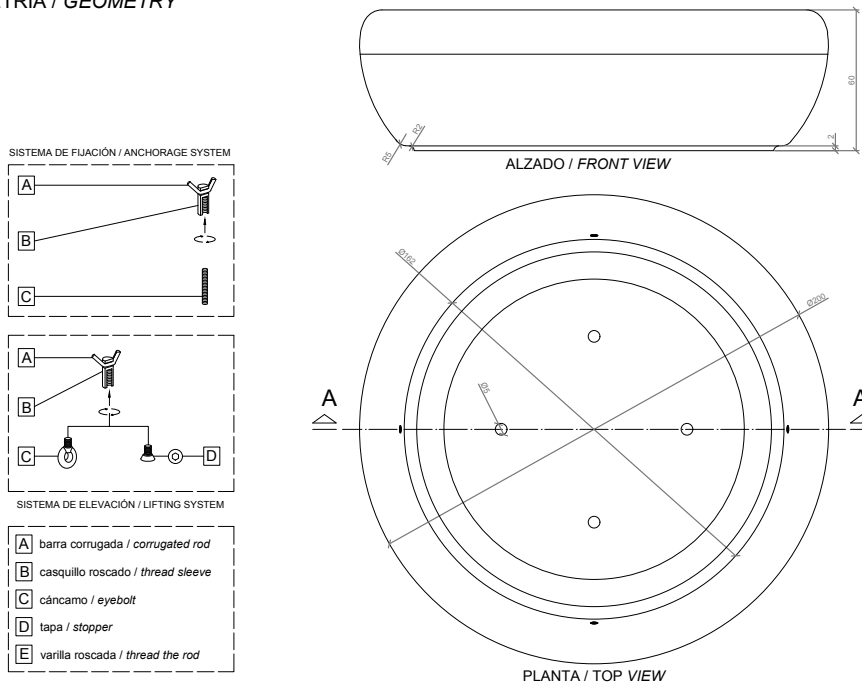
CARACTERÍSTICAS / FEATURES

**Material** hormigón Petra 1  
**Acabado** decapado e hidrofugado  
**Dimensiones** l. Ø200, h. 60 cm  
**Color** ver carta de colores  
**Fijación** por su propio peso o mediante varilla metálica  
**Peso** 1090 Kg / 780 L  
**Palet** 210 x 210 cm

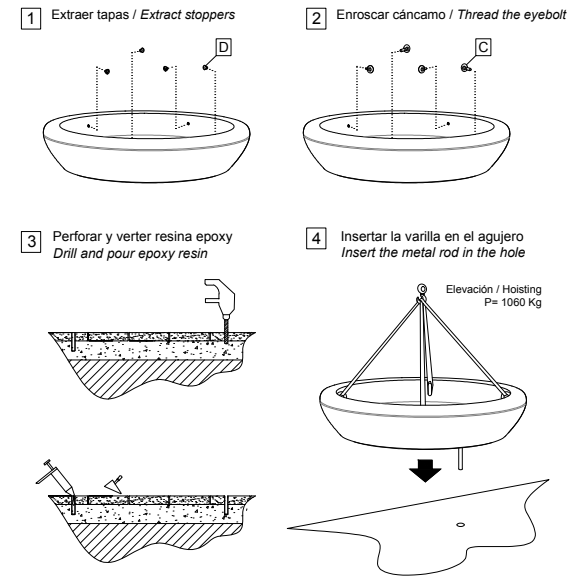
**Material** precast concrete Petra 1  
**Finish** scaled and waterproofed  
**Dimensions** l. Ø200, h. 60 cm  
**Colour** see colour catalogue  
**Fixing** resting on the ground or with metal rod  
**Weight** 1090 Kg / 780 L  
**Pallet** 210 x 210 cm



GEOMETRIA / GEOMETRY



MANIPULACIÓN E INSTALACIÓN / HANDLING AND INSTALLATION



ESPECIFICACIONES / SPECIFICATIONS

